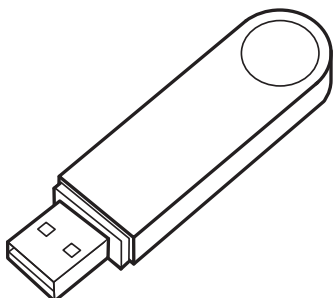


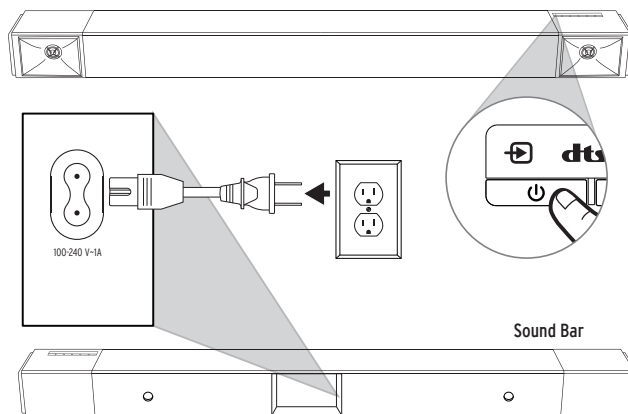
Klipsch CINEMA 400 SOUND BAR

FIRMWARE UPDATE INSTRUCTIONS

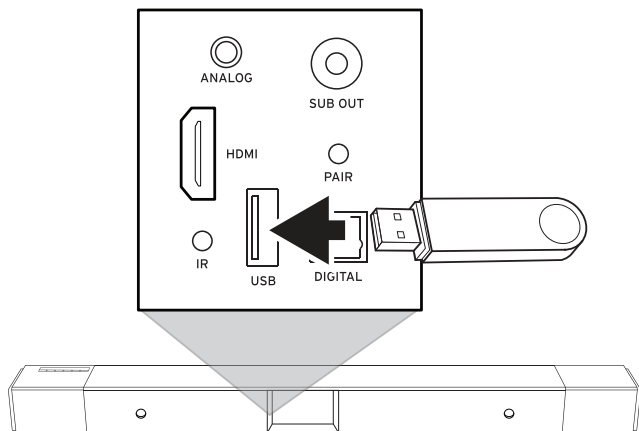
- 1 Download the update file from klipsch.com/firmware/cinema400 to an empty USB Flash Drive (FAT32 format).



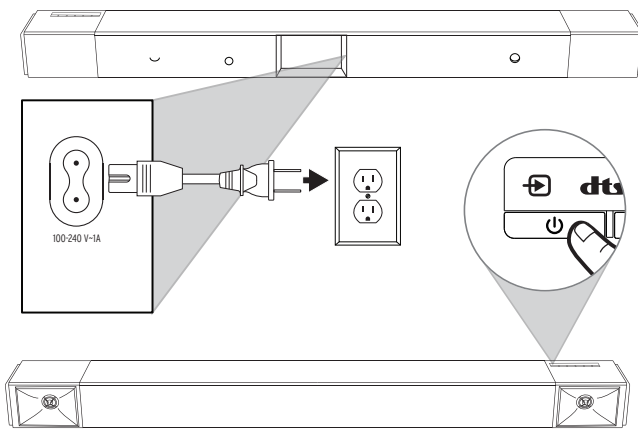
- 2 Turn the Power Switch "OFF" and unplug the Power Cord.



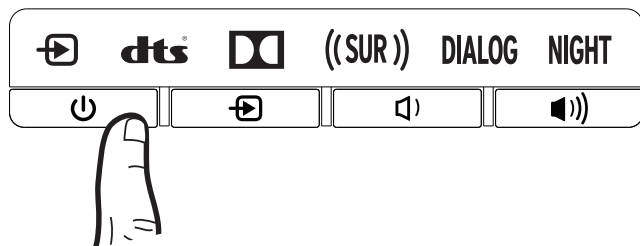
- 3 Insert the USB Flash Drive into the USB port on the back panel of your Sound Bar.



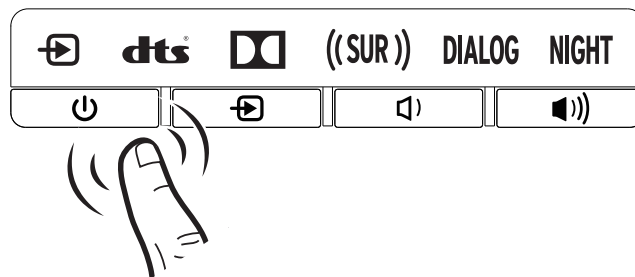
- 4 Press and hold the Power Button while plugging in the Power Cable.



- 5 Continue holding the Power Button until ALL Indicator Lights light up in order.
DTS > DOLBY > SUR > DIALOG > NIGHT



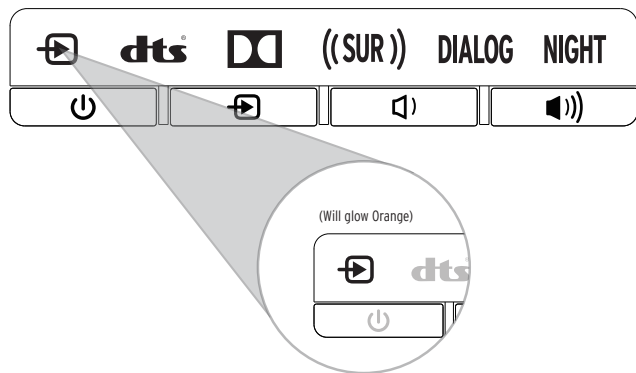
- 6 After the lights go out release the Power Button. Your Sound Bar will restart.



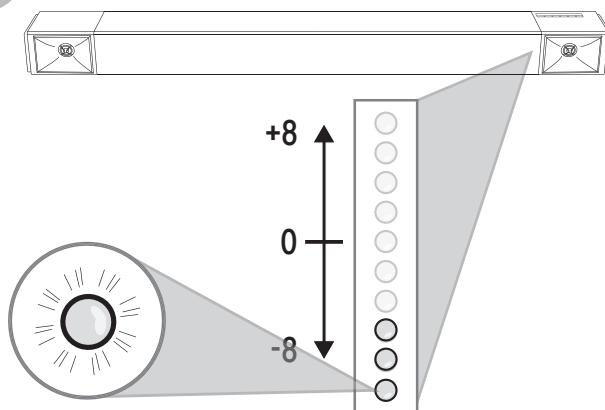
Klipsch CINEMA 400 SOUND BAR

FIRMWARE UPDATE INSTRUCTIONS

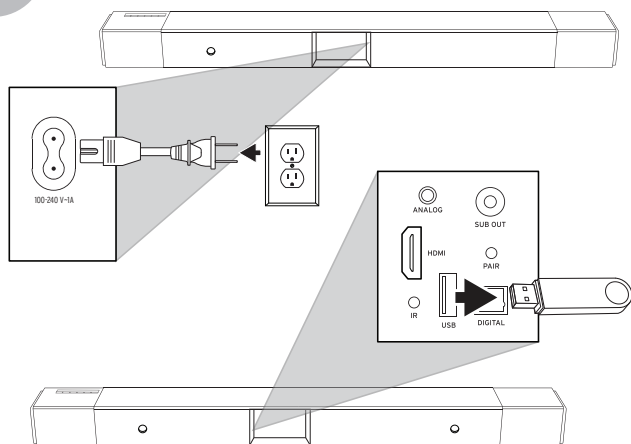
- 7** Once your Cinema 400 turns back on, the source indicator LED light on the top will glow orange indicating it is in HDMI mode.



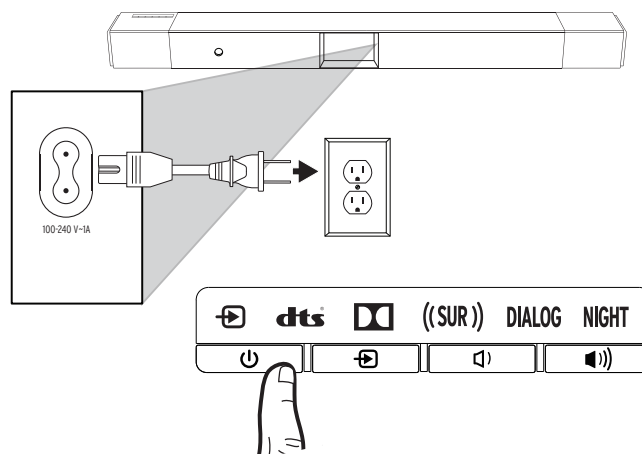
- 8** Front Volume LED's will show the Volume at 3.



- 9** Unplug your Sound Bar and Remove the USB drive.



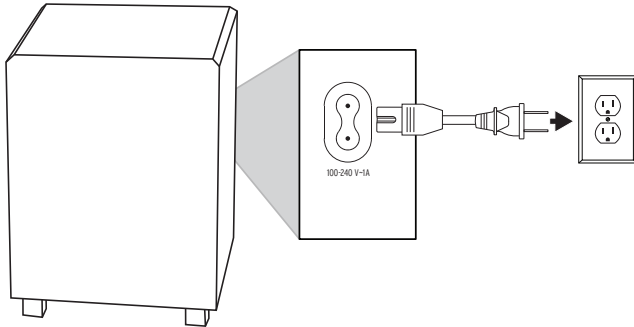
- 10** Plug your Sound Bar back in. The update is complete. Turn on and enjoy.



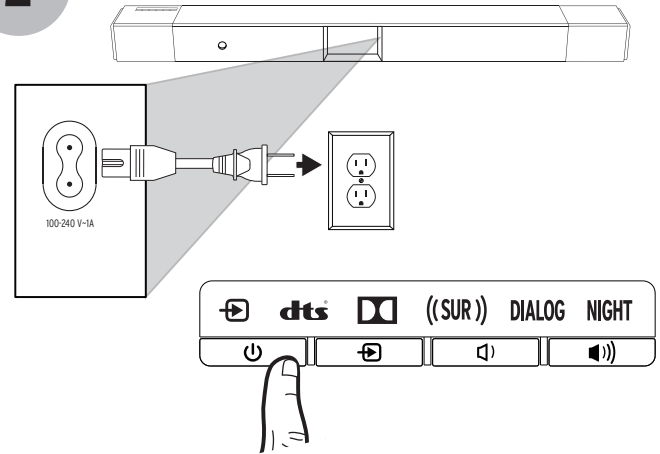
Klipsch® CINEMA 400 SOUND BAR

RE-PAIRING SUBWOOFER (After Firmware Update)

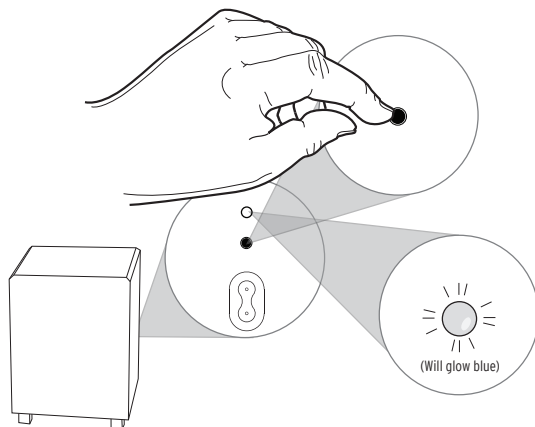
- 1 Ensure the subwoofer is plugged in.



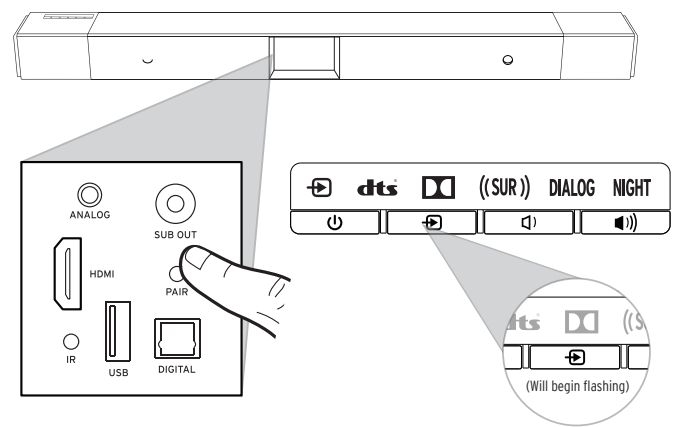
- 2 Front Volume LED's will show the Volume at 3.



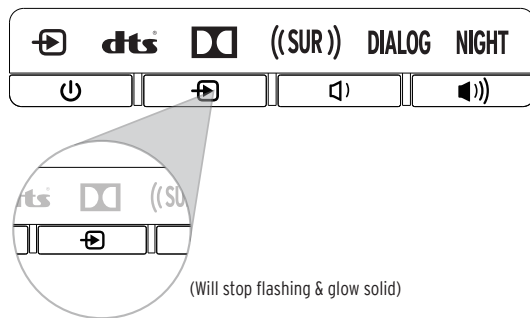
- 3 Press and hold the pairing button on the back of the subwoofer for 3 seconds until the blue LED begins flashing rapidly.



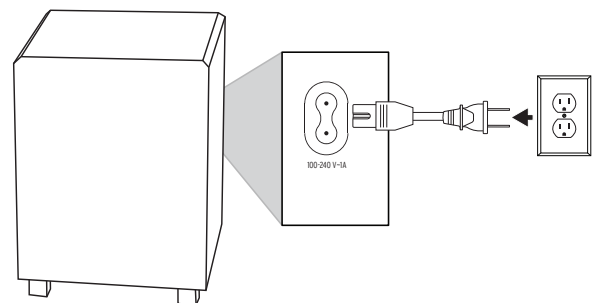
- 4 Press and hold the pairing button on the back of the Sound Bar for 3 seconds until the source LED begins flashing.



- 5 Wait until the source indicator on the Sound Bar stops flashing and glows solid. This indicates a successful connection with the subwoofer.



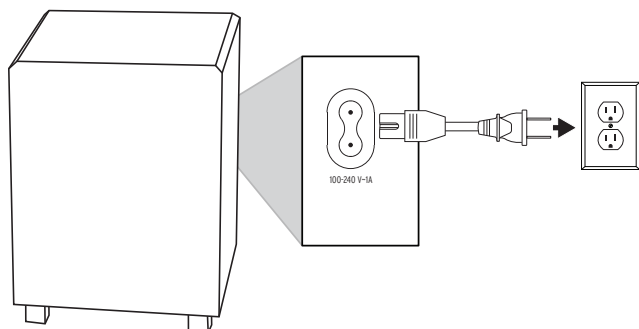
- 6 Unplug the Power Cable on the back of the subwoofer and wait until the blue LED is **COMPLETELY** off.



Klipsch® CINEMA 400 SOUND BAR

7

Plug the Power Cable back into the subwoofer.



RE-PAIRING SUBWOOFER (After Firmware Update)

8

Sub will turn on and connect with Sound Bar in 10 - 15 seconds, showing a solid blue LED to indicate it is paired and ready to use.

